



Glebe Court, Grange Road, London

Set on the ground floor of this popular three-storey development is this two double bedroom apartment in a prime residential spot just a short distance from the heart of Ealing Broadway.

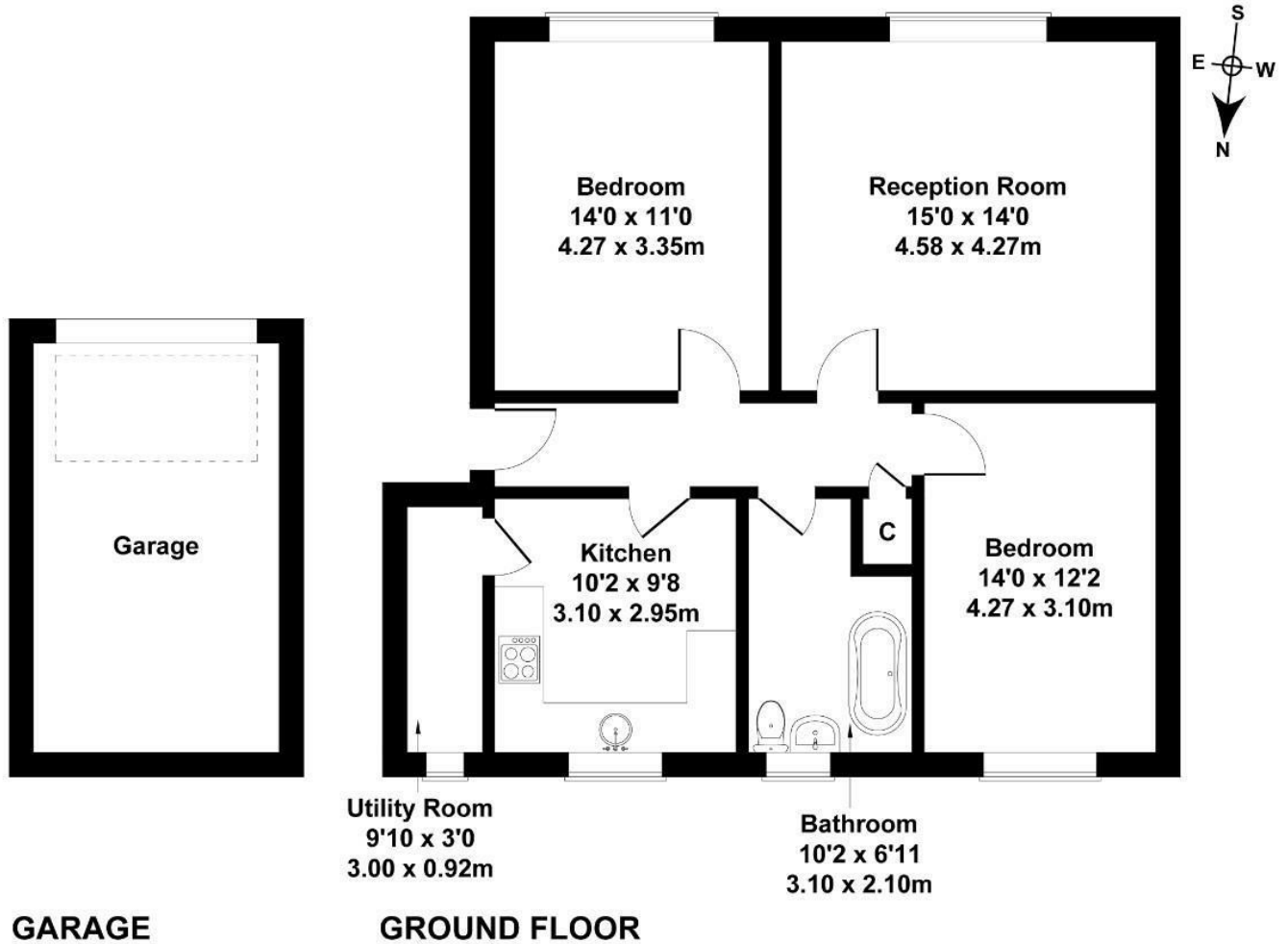
The property is well-proportioned and set up as two double bedrooms that measures close to 800 sq ft with large eat in kitchen (10'2 x 9'8) and reception (15' x 14') and comes with a private garage, large well-groomed communal grounds, a share of the freehold and no onward chain

- Two double bedrooms
- Purpose built
- Ground floor flat
- Garage
- Share of Freehold
- Short walk to Ealing Broadway
- No chain
- Good condition throughout
- Utility room
- Close to multiple public transport links

£525,000

Glebe Court

Approximate Gross Internal Area
786 sq ft - 73 sq m
(Excluding Garage)



Energy Efficiency Rating		
	Current	Potential
<i>Very energy efficient - lower running costs</i>		
(92 plus) A		
(81-91) B		
(69-80) C	69	
(55-68) D		
(39-54) E		
(21-38) F		
(1-20) G		
<i>Not energy efficient - higher running costs</i>		
England & Wales	EU Directive 2002/91/EC	